



INJURY SURVEILLANCE IN THE NORTH WEST OF ENGLAND

**University Hospitals of Morecombe Bay NHS Trust Monthly Bulletin:  
August 2008 to July 2009**

This bulletin provides a breakdown of all trauma<sup>i</sup> attendances at University Hospitals of Morecombe Bay NHS Trust accident and emergency departments (AEDs)<sup>ii</sup> between August 2008 and July 2009. Figure 1 illustrates the number of trauma attendances by month of attendance, these peaked in June (n=3,265), with February (n=2,185) having the fewest.

**Figure 1: Total number of trauma attendances by month, August 2008 to July 2009**

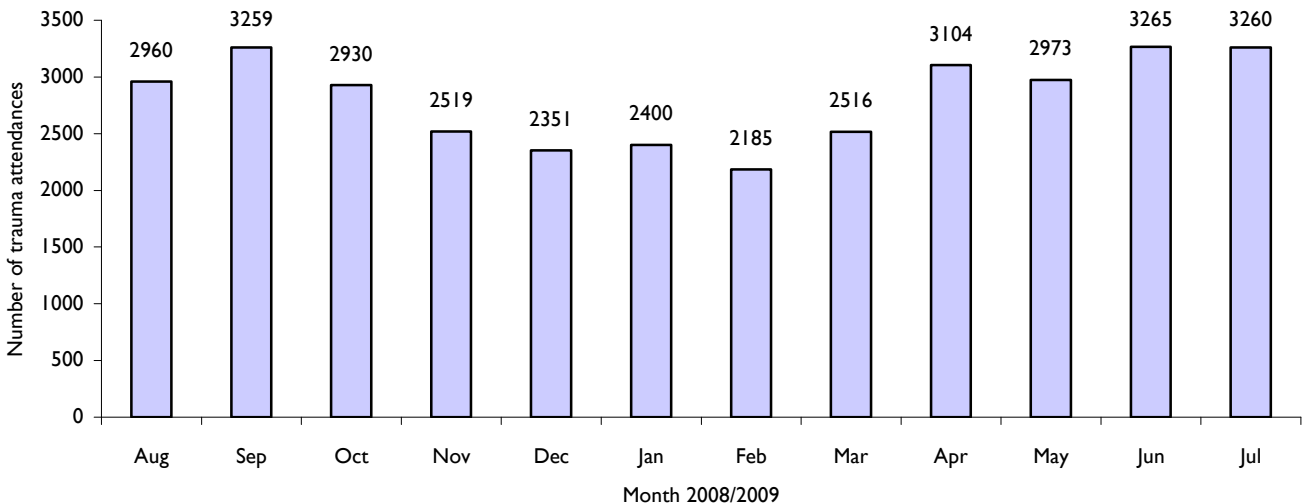


Figure 2 illustrates trauma attendances by gender. For all months there were more male (57%) trauma attendances than female presenting at University Hospitals of Morecombe Bay NHS Trust AEDs.

**Figure 2: Gender of trauma attendances by month, August 2008 to July 2009**

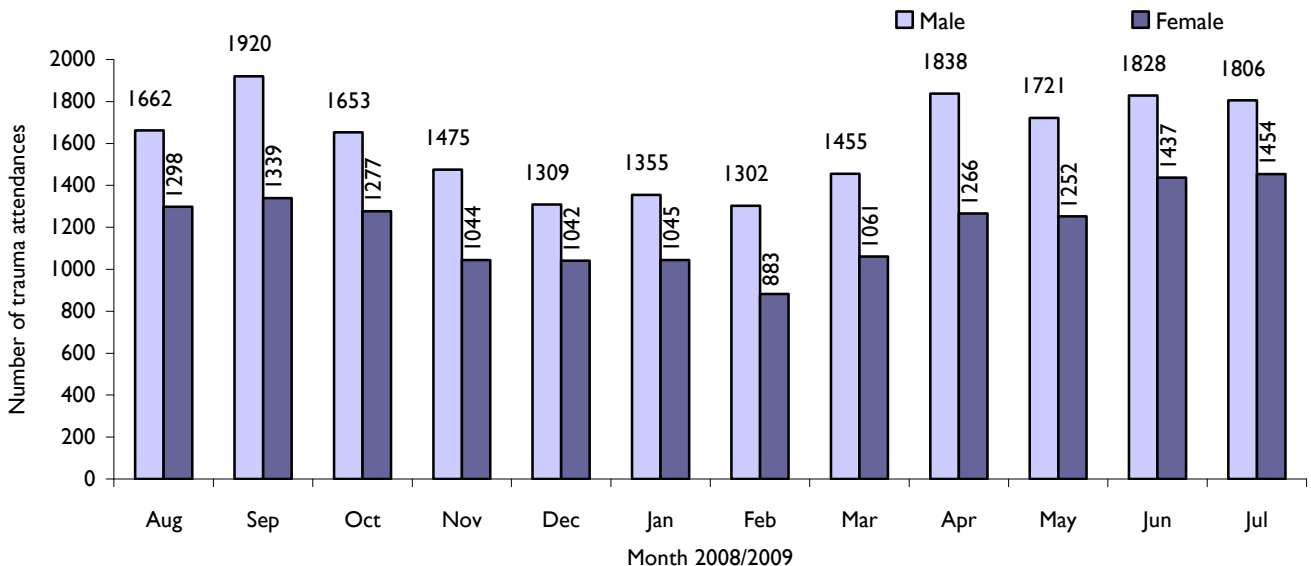


Figure 3 presents the age group of trauma attendances. Across the whole year almost a third (38%) of trauma attendances were aged 25 – 59, while 29% were aged 5 – 19 years.

**Figure 3: Age group of trauma attendances by month, August 2008 to July 2009**

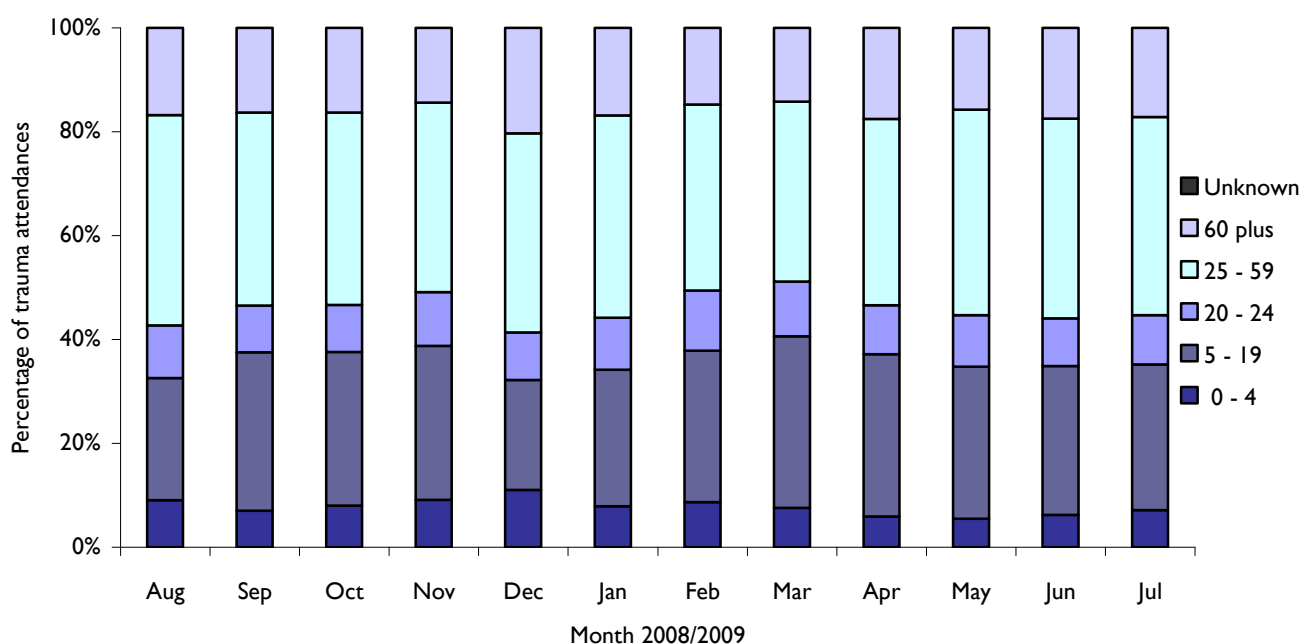


Table 1 details the injury group of trauma attendances. The most common cause of injury was by ‘other accident’, (76%). Of those attendances where an injury group was specified 50% were sports injuries and 31% road traffic accidents.

**Table 1: Trauma attendances by injury group, August 2008 to July 2009<sup>iii</sup>**

Injury group*	Aug	Sep	Oct	Nov	Dec	Jan	Feb	Mar	Apr	May	Jun	Jul	Total	%
Other accident	2432	2457	2215	1731	1841	1748	1524	1750	2384	2191	2629	2624	25526	76
Sports injury	222	411	405	404	201	347	366	474	410	409	312	261	4222	13
Road traffic accident	190	254	207	241	185	186	173	180	173	195	216	219	2419	7
Assault	86	105	80	101	95	76	86	82	95	130	86	100	1122	3
Deliberate self-harm	30	32	23	40	29	43	36	30	42	48	22	56	431	1
<b>Total</b>	<b>2960</b>	<b>3259</b>	<b>2930</b>	<b>2519</b>	<b>2351</b>	<b>2400</b>	<b>2185</b>	<b>2516</b>	<b>3104</b>	<b>2973</b>	<b>3265</b>	<b>3260</b>	<b>33722</b>	<b>100</b>

\*Please note firework injuries have been excluded because of low numbers. However, total trauma includes firework injuries.

As table 2 shows other accidents make up the majority of the trauma attendances in the zero to four (94%) and 60 plus (92%) age group, this is likely to be due to falls and other injuries being recorded as ‘other accident’. Apart from other accidents, sport injuries were the most common injury group in people aged five to 19 (22%) and 20 to 24 (20%). In the 25 - 59 age group, sports injuries (9%) and road traffic accidents (9%) were most frequent.

**Table 2: Trauma attendances by injury group and age group, August 2008 to July 2009**

Injury group	00 - 04		05 - 19		20 - 24		25 - 59		60 plus		Total
	N	%	N	%	N	%	N	%	N	%	
Other accident	1861	94	6634	68	1995	59	9825	76	5211	92	25526
Sports injury	46	2	2138	22	661	20	1180	9	197	3	4222
Road traffic accident	62	3	538	6	398	12	1181	9	240	4	2419
Assault	<5	0	337	3	248	7	515	4	20	0	1122
Deliberate self-harm	<5	0	118	1	58	2	243	2	12	0	431
<b>Total</b>	<b>1971</b>	<b>100</b>	<b>9766</b>	<b>100</b>	<b>3361</b>	<b>100</b>	<b>12944</b>	<b>100</b>	<b>5680</b>	<b>100</b>	<b>33722</b>

Table 3 illustrates the source of referral for patients presenting with trauma injuries. The majority (76%) of trauma attendees self-referred.

**Table 3: Trauma attendances by source of referral, August 2008 to July 2009**

Source of referral	Aug	Sep	Oct	Nov	Dec	Jan	Feb	Mar	Apr	May	Jun	Jul	Total	%
Self-referral	2300	2553	2289	1975	1782	1810	1617	1890	2269	2321	2454	2424	25684	76
Other	217	281	239	212	190	232	253	289	418	289	381	409	3410	10
Emergency services	306	301	251	209	233	223	202	201	261	261	312	328	3088	9
GP	70	40	53	43	61	47	36	38	63	35	43	37	566	2
Educational establishment	<5	33	39	27	33	23	29	51	29	16	24	13	317	1
Work	40	27	37	30	18	28	26	24	25	19	23	19	316	1
Police	15	22	18	21	31	31	18	20	36	26	24	24	286	1
Health care provider: same or other	10	<5	<5	<5	<5	6	<5	<5	<5	5	<5	6	48	0
Unknown	<5	<5	<5	<5	<5	<5	<5	<5	<5	<5	<5	<5	<5	0
Community dental service	<5	<5	<5	<5	<5	<5	<5	<5	<5	<5	<5	<5	<5	0
General Dental Practitioner	<5	<5	<5	<5	<5	<5	<5	<5	<5	<5	<5	<5	<5	0
Local authority social services	<5	<5	<5	<5	<5	<5	<5	<5	<5	<5	<5	<5	<5	0
<b>Total</b>	<b>2960</b>	<b>3259</b>	<b>2930</b>	<b>2519</b>	<b>2351</b>	<b>2400</b>	<b>2185</b>	<b>2516</b>	<b>3104</b>	<b>2973</b>	<b>3265</b>	<b>3260</b>	<b>33722</b>	<b>100</b>

As table 4 shows that after self-referral the most frequent source of referral was 'other' in zero to four year olds and five to 19 year olds (20%). In people aged 20 - 24 (7%), 25 - 59 (8%) and 60 plus (23%) referral by the emergency services was most common.

**Table 4: Trauma attendances by source of referral and age group, August 2008 to July 2009**

Source of referral	00 - 04		05 - 19		20 - 24		25 - 59		60 plus		Total
	N	%	N	%	N	%	N	%	N	%	
Self referral	1200	61	6823	70	2860	85	10943	85	3858	68	25684
Other	655	33	1954	20	134	4	382	3	285	5	3410
Emergency services	84	4	477	5	231	7	998	8	1298	23	3088
GP	16	1	94	1	34	1	205	2	217	4	566
Educational establishment	12	1	302	3	<5	0	<5	0	<5	0	317
Work	<5	0	28	0	45	1	228	2	15	0	316
Police	<5	0	66	1	51	2	164	1	<5	0	286
Health care provider: same or other	<5	0	19	0	<5	0	20	0	<5	0	48
Community dental service	<5	0	<5	0	<5	0	<5	0	<5	0	<5
General Dental Practitioner	<5	0	<5	0	<5	0	<5	0	<5	0	<5
Unknown	<5	0	<5	0	<5	0	<5	0	<5	0	<5
<b>Total</b>	<b>1971</b>	<b>100</b>	<b>9766</b>	<b>100</b>	<b>3361</b>	<b>100</b>	<b>12944</b>	<b>100</b>	<b>5680</b>	<b>100</b>	<b>33722</b>

Table 5 presents trauma attendances by location of incident. Around three in ten of all trauma attendances occurred in a public place (33%) and 30% occurred in the home.

**Table 5: Trauma attendances by location of incident, August 2008 to July 2009**

Location	Aug	Sep	Oct	Nov	Dec	Jan	Feb	Mar	Apr	May	Jun	Jul	Total	%
Public place	1082	930	949	865	767	763	746	792	1000	1025	1053	1085	11057	33
Home	952	1006	805	642	710	777	571	703	1065	828	1121	1059	10239	30
Other	659	799	658	578	579	485	512	549	689	718	644	722	7592	23
Work	260	288	278	223	159	215	191	212	218	231	231	279	2785	8
Educational establishment	7	236	240	211	136	160	165	260	132	171	216	115	2049	6
Unknown	<5	<5	<5	<5	<5	<5	<5	<5	<5	<5	<5	<5	<5	0
<b>Total</b>	<b>2960</b>	<b>3259</b>	<b>2930</b>	<b>2519</b>	<b>2351</b>	<b>2400</b>	<b>2185</b>	<b>2516</b>	<b>3104</b>	<b>2973</b>	<b>3265</b>	<b>3260</b>	<b>33722</b>	<b>100</b>

Table 6 shows the disposal method of trauma attendances. Nearly half (47%) of attendees were discharged requiring no follow-up treatment.

**Table 6: Disposal method of all trauma attendances, August 2008 to July 2009**

Disposal method	Aug	Sep	Oct	Nov	Dec	Jan	Feb	Mar	Apr	May	Jun	Jul	Total	%
Discharged - did not require follow-up treatment	1207	1453	1368	1202	1071	1108	1041	1198	1443	1451	1638	1564	15744	47
Discharge - follow up care by GP	688	719	667	531	472	496	462	559	624	602	596	672	7088	21
Referred to fracture clinic	383	444	375	351	352	337	307	337	406	370	374	343	4379	13
Admit to hospital bed	247	232	189	155	183	193	150	158	265	194	251	239	2456	7
Referred to A&E clinic	144	154	143	111	99	110	67	89	97	118	126	129	1387	4
Left - before being treated	90	108	51	49	52	29	49	55	87	71	105	133	879	3
Refer to other HCP	72	50	54	31	46	47	49	43	74	68	63	73	670	2
Referred to out-patient clinic	49	63	41	57	35	40	35	48	54	53	67	53	595	2
Transfer to other health care provider	54	20	27	22	29	26	19	18	29	30	27	40	341	1
Left - refused treatment	13	12	7	6	11	8	<5	8	8	8	13	11	109	0
Other	11	<5	5	<5	<5	5	<5	<5	7	6	<5	<5	48	0
Restore to ward	<5	<5	<5	<5	<5	<5	<5	<5	5	<5	<5	<5	11	0
Not Specified	<5	<5	<5	<5	<5	<5	<5	<5	<5	<5	<5	<5	8	0
Patient died in department	<5	<5	<5	<5	<5	<5	<5	<5	<5	<5	<5	<5	7	0
<b>Total</b>	<b>2960</b>	<b>3259</b>	<b>2930</b>	<b>2519</b>	<b>2351</b>	<b>2400</b>	<b>2185</b>	<b>2516</b>	<b>3104</b>	<b>2973</b>	<b>3265</b>	<b>3260</b>	<b>33722</b>	<b>100</b>

Published September 2009

Dan J Hungerford (TIIG Analyst)

Centre for Public Health, Liverpool John Moores University, 5<sup>th</sup> Floor, Kingsway House, Liverpool, L3 2AJ

Tel: 0151 231 8728 Email: [d.j.hungerford@ljmu.ac.uk](mailto:d.j.hungerford@ljmu.ac.uk)

Website: [www.tiig.info](http://www.tiig.info) (please note data requests should be made through the website)

<sup>i</sup> Trauma refers to all AED attendances presenting as a result of an intentional/unintentional injury.

<sup>ii</sup> Westmorland General Hospital AED, Furness General Hospital AED, and Royal Lancaster Infirmary AED

<sup>iii</sup> Please note that all numbers less than five have been suppressed in line with patient confidentiality and if there is only one number <5 in a category then two numbers will be suppressed at the next level (e.g. <10) in order to prevent back calculations from totals.